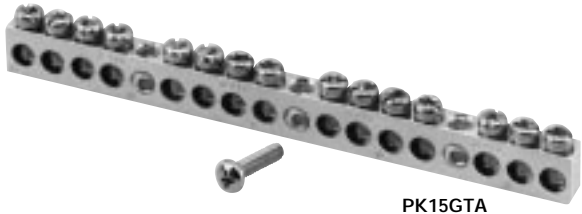


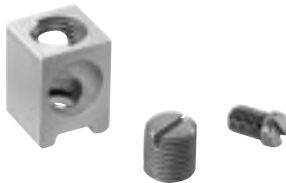
HOMELINE® Circuit Breaker Load Centers Accessories



PK15GTA

Grounding Bar Kits

- Field installable in all load centers.
- Wire size of terminals (See Technical Information page 8.)
- Suitable for copper or aluminum wire.
- Available with large lug PK15GTA-L, PK18GTA-L and PK23GTA-L. (See Technical Information page 8).

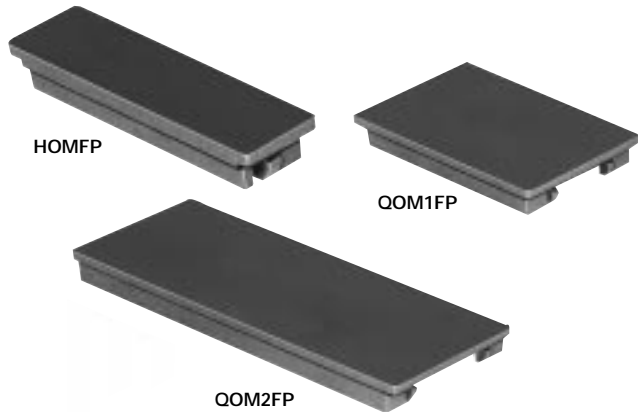


LK100AN

Auxiliary Neutral Lugs

- UL Listed for copper or aluminum wire.
- Field installable on neutral assembly.

LK70AN #12 to #2 Al or #14 to 4 Cu AWG
LK100AN #6 to #2/0 AWG



Cover Filler Plates

- Fast to install – snap-in type.
- HOMFP branch circuit.
- QOM1FP 50 through 125 Ampere main breaker.
- QOM2FP 150 through 225 Ampere main breaker.

Flush Lock Kits

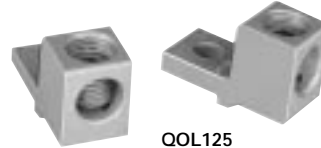
- Available for indoor load centers.
- Two keys provided with each lock kit.
- PK6FL for single phase convertible 8-42 circuit load centers.



PK6FL

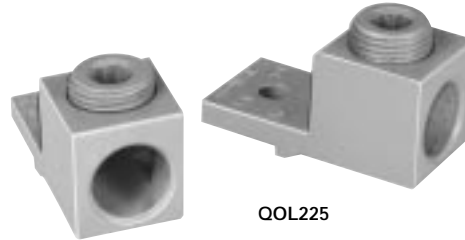
Main Lugs Kits

- Field installable in main breaker or main lugs load centers.



QOL125

- 125 Ampere kit usable in 100 through 125 Ampere load centers.

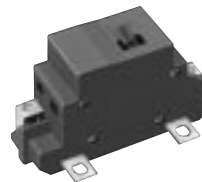


QOL225

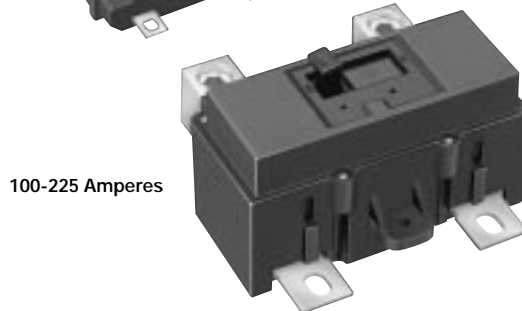
- 225 Ampere kit usable in 150 through 225 Ampere load centers.

Main Breaker Kits

- Field installable in main lugs or main breaker load centers.
- 22,000 Amps Interrupting Rating main breaker kit 50 through 225 Amperes usable with 10,000 Amps Interrupting Rating branch circuit breakers.



50-125 Amperes



100-225 Amperes

